

The Emanuel News

January/February 2010 • Tevet/Shevat/Adar 5770

FROM THE RABBI *THE SNOWBALL EFFECT*

“The reward for a mitzvah is another mitzvah. *Mitzvah gorreret mitzvah*. One Mitzvah generates another.” The Sages coined these sayings to encourage us to do the right thing again and again. The Torah is looking for patterns of action, not just isolated deeds. “G-d, in Search of Man” to use Rabbi Heschel’s phrase, is seeking a committed relationship.



Repeated action and a widening circle of actors, leads to dynamic growth in the spiritual and physical life of the congregation. This is the power of reinforcement. Social scientists have observed that a person, having committed to an action once, is more likely to repeat it in the future. When one person becomes active in a *mitzvah*, they tend to invite another to join in, widening the circle. I like to call it the Snowball Effect.

As I write tonight, the first winter snow is falling outside. I think back to my childhood in Kansas City, build-

ing snow forts and snowmen in the front yard on Walnut Street. The best snow was the kind that packed and stuck to itself. When you rolled a small snowball in the freshly fallen snow, it grew. The more you rolled, the more it grew. Once, Jimmy Hamilton and I started a small ball rolling at the top of our block and rolled it all the way down the hill until it was four feet in diameter and, eventually, too heavy to roll any further. It was awesome.

The snowball effect works well with many *mitzvot*. Take, for example the mitzvah of showing up at daily minyan or at Shabbat services.

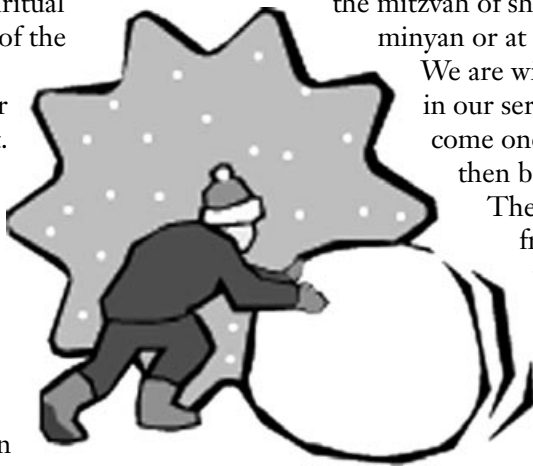
We are witnessing growth in our services. People come once or twice, and then become regulars.



They bring their friends and relations, who bring their friends and relations. Recently, at a full Shabbat eve service in the chapel, one

young boy looked around and said to me, “Rabbi, looks like our snowball is growing!”

I hope he is right! Let’s keep the (snow)ball rolling!

— David J. Small




Save the Date!
Please join the Emanuel family in honoring
Suzanne Connell
on the occasion of her retirement as
Executive Director of the synagogue.
Brunch at 10:30 a.m.
June 6, 2010
More details to follow!


Inside This Issue...

Community of Prayer.....	2
President’s Message	2
Notes From the Cantor.....	3
Purim Information	3
Community of Learning	8
Community of Caring	10
Community of Action	11
Brotherhood	12
Job Club.....	13
Sisterhood.....	14
Donations	15
Service Times/ Calendar of Events	19-20

SAVE THE DATE...
FOR SISTERHOOD’S COMEDY NIGHT ON SATURDAY,
JANUARY 23RD, FEATURING PETE MICHAELS AND ROBIN
FOX. SEE PAGE 4 FOR MORE INFO & TICKET ORDER FORM.

Community of PARTICIPATORY PRAYER / Tefilah

תפילה

PRESIDENT'S MESSAGE — OUR GREATEST RESOURCE: EACH OTHER.....by Alan S. Parker

The Board of Trustees has been working on filling various lay leader opportunities at the Emanuel. You will read below about seven priority positions (and there are others), the objectives of each position, time requirements and the opportunity.



In his monograph *Good to Great and the Social Sectors*, Jim Collins writes that the number one resource of a great organization is having enough of the right people willing to commit themselves to its mission. Please let me know if you are interested in an opportunity to volunteer your time and skills.

1. Emanuel Newsletter: Editor(s). Oversee the publication of six bi-monthly newsletters.

Objectives: Publish newsletter. Work with publisher on layout and proofreading. Coordinate with contributors to newsletter, including clergy, lay leaders and the arms. Explore potential improvements to content and style. Work on alternative modes of distribution (phase III of communication changes)

Time requirements: For months when the newsletter is published, approximately 5-6 hours per month. Meet with Communication Policy leader (see number 5 below) to determine the future distribution plans for the newsletter.

Opportunity: Put a new "stamp" our traditional communication vehicle. Opportunity to work with all key lay leaders and clergy who contribute to the newsletter. Help shape future of online distribution of the newsletter.

2. Emanuel as a welcoming community. Oversee greeter teams and community announcements at Shabbat services.

Objectives: Expand greeter teams and integrate the success of our greeter teams to High Holiday services in 2010. Work with Rabbi Small, the Ritual chair and other lay leaders on High Holiday planning. Work to include addressing appropriate decorum guidelines to maintain our vision of a welcoming community to all.

Time requirements: About 20 minutes each week for emails to greeter teams and follow up for substitutions. Two to three planning discussions with Rabbi Small, Ushers Committee Chair and Ritual Chair with respect to High Holiday planning. One to two meetings during August- September 2010 with greeters and ushers.

Opportunity: Work with and get to know lay leaders and clergy to

further improve our reputation as a welcoming community. This position will have a direct impact on how our members and guests feel about our community.

3. Fundraisers for 2010- 2011. Help determine and plan two fundraisers during FY 2011.

Objectives: Review and recommend various major fundraising ideas for 2011 fiscal year and help recruit volunteers to work on fundraisers

Time requirements: Two planning meetings during February and March 2010. Attend Communication, Calendar and Collaboration meeting in March 2010. Follow up work to jump-start committees.

(continued on page 7)

The Emanuel News
The Emanuel Synagogue
160 Mohegan Drive
West Hartford, CT 06117



The Emanuel News (USPS 174-820) is published bi-monthly by The Emanuel Synagogue, 160 Mohegan Drive, West Hartford, CT 06117. Periodicals Postage Paid at Hartford, CT. POSTMASTER: Send address changes to *The Emanuel News*, 160 Mohegan Drive, West Hartford, CT 06117.

Business Office (860) 236-1275
Business Office Fax (860) 231-8890
School Office (860) 233-2774
Internet Address: www.emanuelsynagogue.org
General Email:.....emansyn@emanuelsynagogue.org

OFFICERS AND STAFF

EMAIL

VOICE MAIL EXT.

Alan S. Parker	President.....	aparker24@comcast.net	
David J. Small	Rabbi.....	rabbismall@emanuelsynagogue.org	115
Philip Lazowski	Rabbi.....	carolyn@emanuelsynagogue.org	115
Gerald B. Zelermyer	Rabbi Emeritus		
Moshe Pinchover.....	Ritual Director.....	mpinch@emanuelsynagogue.org	117
Sanford Cohn	Cantor.....	cantorcohn@emanuelsynagogue.org	114
Suzanne Connell.....	Executive Director.....	suzanne@emanuelsynagogue.org	112
Judith T. Fox.....	Education Director.....	judyefox@emanuelsynagogue.org	122
Dr. Michael Levine.....	Board Chairman.....	docmikelev@sbcglobal.net	
Carolyn Topol.....	Rabbi's Assistant.....	carolyn@emanuelsynagogue.org	110
Debbie Guggenheim	Admin. Assistant.....	debbie@emanuelsynagogue.org	116
Beth Polebaum	Librarian.....	library@emanuelsynagogue.org	124
Francene Weingast ...	Connections Coordinator.....	francene@emanuelsynagogue.org	
Grae Sibelman	Family Educator.....	grae@emanuelsynagogue.org	

The Emanuel Synagogue is affiliated with The United Synagogue of Conservative Judaism.

PLEASE JOIN US FOR PURIM SERVICES

EREV PURIM — SATURDAY NIGHT
February 27, 2010/13 Adar 5770



- 5:30 p.m. Mincha
- 6:15 p.m. Ma'ariv and Megillah Reading for All Ages in the Sanctuary (Megillah Reading will begin approximately 6:30 p.m.)
- 6:00 p.m. Pre-School Quiet Mini-Megillah Reading and Refreshments in the Chapel
- 6:45 p.m. Costume Parade in the Sanctuary



All are invited to come in costume. Groggers will be given out.

PURIM CAFE: Evening ends with Hamentaschen and ice cream for the kids and our Purim Cafe for adults sponsored by Sisterhood, Brotherhood and the Minyonaires! We'll have flavored coffees and grown-up desserts.

PURIM DAY — SUNDAY MORNING
February 28, 2010/14 Adar 5770



- 8:00 a.m. Morning Minyan with full Megillah Reading in the Chapel

prune filling for Hamentaschen - 1 lb. stewed prunes

HAMANTASCHEN

1 cup sugar. Remove pits from prunes. Chop prunes & nuts fine. Add the juice, cinnamon & sugar to mixture.

1 cup chopped nuts • 1 tsp lemon juice • 1/4 tsp cinnamon • 1 cup chopped nuts • 1 tsp lemon juice • 1/4 tsp cinnamon

NOTES FROM THE CANTOR

THE IMPORTANCE OF NUSAH
by Hazzan Sanford Cohn



At The Emanuel, we constantly encourage congregational participation. As I've written and lectured on several occasions, this participation occurs in a few different forms. My focus in this column is the participation of congregants leading services.

What does it take to be a *sh'liach/sh'lihat tzibur* (literally, "messenger of the congregation")? Obviously, one must be able to read the Hebrew prayers accurately. Our *t'filot* were written, for the most part, some 2,000 years ago. They have served as expressions of our people's ideals and theology for centuries. While it is sometimes acceptable to add to our liturgy, we certainly don't want to change or take away from the standard prayers as we find them in the *siddur* and *mahzor*.

Of nearly equal importance is chanting the prayers in the correct *nusah*. I use the word *nusah* in this context to mean the traditional melodic structure of each prayer service. Our Ashkenazi tradition that predominates in North America prescribes certain melodic structures for particular *t'filot* or for entire services. Where or when these melodies originated is not generally known, but most are so well-established as to be called *Misnainai* tunes, as if they were given at Mt. Sinai along with the law.

While I acknowledge the hyperbole of this term, it points to the importance of chanting the appropriate melodies for each service. Each *nusah* lends a particular mood or feeling to our liturgy. One may ask, "What's wrong with using the High Holy Day melody for the *Bar'chu* in a

(continued on page 5)

Sisterhood of Emanuel
Synagogue Presents:

**JAN
23**

COMEDY NIGHT 2010

EMANUEL SYNAGOGUE, 160 MOHEGAN DRIVE, WEST HARTFORD, CT

doors open at **8PM**
show starts at **9PM**

**PETE MICHAELS
ROBIN FOX**

Please make checks payable to

Emanuel Sisterhood

and mail no later than
January 16, 2010 to:

Reesa Olins
62 Brewster Road
West Hartford, CT 06117

Please use this form to indicate seating preference.

Tables of 10 & 12 are available. For reservations, call
Reesa Olins 860-523-9881 or Fay deHaas at
860-690-0998 for information. Thank you!

Chuckling: \$25.00 per adult **Total:** _____

Laughing: \$50.00 per adult **Total:** _____

Roaring: \$72.00 per adult **Total:** _____

Note: Laughing & Roaring will be listed in the program.

Name: _____

Day Phone: _____

Address: _____

Evening Phone: _____

COMBINED EMANUEL AND TEMPLE BETH EL SISTERHOODS

INVITE YOU TO ATTEND

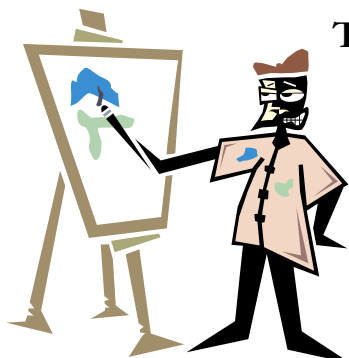
OUR TWENTY-EIGHTH ANNUAL JOINT WINTER DESSERT MEETING

TUESDAY EVENING, JANUARY 26TH AT 7:30 P.M.

(SNOW DATE: WEDNESDAY, JANUARY 27)

presenting

**ALAN FALK — ARTIST, GRAPHIC DESIGNER & ILLUSTRATOR
DISCUSSING HIS OWN JEWISH CONTEMPORARY ART WORKS**



Originally from Manchester, England, Falk studied at the Manchester College of Art and Design, and was awarded the prestigious Granada Fellowship in Fine Art. His work was included in numerous international exhibitions in London galleries. He also taught painting, drawing and printmaking.

Many of Falk's paintings have Biblical references to the prophets since he looks at the Bible and religious thought as a moral and ethical guide, and as a mirror in which to reflect and make decisions about how to live.

His illustrated talk will also explore the profound influence of Jewish thought, values, Judaica text, and biblical writings on modern and contemporary art from the end of the 19th century to the present. The presentation focuses on various aspects of Jewish experience through the eyes of Jewish artists.

You don't have to be art knowledgeable to enjoy this program. You will be inspired listening to Alan Falk's interpretations.

HUSBANDS AND GUESTS ARE ALWAYS INVITED TO JOIN US.

EMANUEL CO-PRESIDENTS: DEBRA BETTAN, MELISSA ZACHARIA

TEMPLE BETH EL PRESIDENT: SHEILA DIAMOND

D'VAR TORAH: SIDRA SPERLING

LIAISON OFFICER FOR BOTH SISTERHOODS AND CHAIRPERSON: GLORIA BEIN

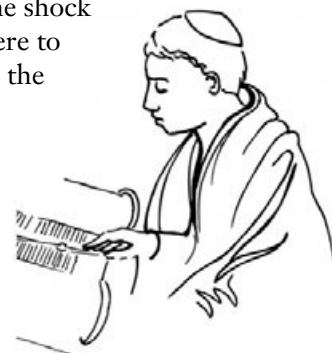
NOTICE TO KOHANIM

**FEBRUARY 13, 2010 IS
SHABBAT MISHPATIM
HACHODESH AS WELL AS
BROTHERHOOD SHABBAT.
ANY EMANUEL KOHANIM
WHO ARE INTERESTED
IN PARTICIPATING IN
THE BLESSING OF
THE KOHANIM ON
THAT DAY SHOULD
CONTACT KEN SIMON AT
KSIMON38@COMCAST.NET
OR 860-233-6958.**

Notes From the Cantor, continued from page 3

weekday *ma'ariv* service?" Experts in the field would answer with a question: "Would you wear a tuxedo to cook dinner?" My teacher and mentor, Hazzan Max Wohlberg, z"l, used to say, "Chanting the wrong *nusah* is like putting your dining room furniture in the bedroom. It may look nice, but it just doesn't fit." (These may not be his exact words, but is a very close approximation.) By the same token, imagine the shock and disappointment of the congregation if I were to chant the beloved *Kol Nidrey* to the melody for the Torah Service.

In order to encourage more congregants to lead our services, Moshe Pinchover and I are happy to provide recordings and private instruction. We are both committed to preserving our sacred musical traditions in the synagogue while promoting our synagogue's goal of increased congregational participation.



GROGGERS AND MEGILLAH CASES ON DISPLAY IN MITNICK CASES

by Gloria Bein, Exhibit Chairperson

“Gloria, it would be nice if you had groggers and megillah cases on display,” Rabbi Philip Lazowski said to me a few months ago. Who am I to respond with anything but “That’s a great idea!” So it was that this exhibit was “born.”

So it is that you will see close to 40 unusual groggers and megillah cases in the Rose, David and Ralph Mitnick cases opposite the Sanctuary.

As you know, the items highlight the holiday of Purim; when Haman’s name is read in the reading of the “Story of Purim,” noises are made and rattles are clamored joyously. Groggers are the noise-makers. There are 21 different groggers in the cases from Persia, Poland, Russia, Japan, Israel, Mexico, Italy, Turkey, Holland, the Phillipines and the United States. Some of them are contemporary; others date back to the 17th, 18th and 19th centuries. You will see them in ivory, olive wood, metal, monkeypod wood, paper maché, bronze and copper.

One of the most outstanding groggers is one in bronze from Russia, dating from the end of the 19th century to early 20th at the time of the pogroms. The Russian Cossack is depicted with block and chain. Hebrew lettering translates “Cursed be Haman; Cursed by the Evil Ones.” This grogger is believed to be the only one of two in the world. Another very impressive one from Persia is made of ivory. The writing on the two sides is by two different craftsmen.

Megillah cases range from 400-500 years old to modern times. One is encased in old deerskin stitched by hand with animal hair. Another outstanding example of craftsmanship is an Israeli silver case with Yemenite designs. The engravings include grape clusters, palm trees, and Haman leading a horse on which Mordecai is sitting wearing the King’s finest clothing, as per the Purim story. The case also bears coral and zircon semi-precious stones.

The megillah cases may be seen in Yemenite silver, olive wood, Polish silver, Lucite, and red mahogany covered with leather. The Megillas (or megillot) originate in Morocco, France, Israel and Poland. Two of the megillot are very rare in that they are referred to as “Hamelech” megillot. Every column begins with “Hamelech, (the King), referring to King Achashveros, husband of Queen Esther.

ONE OF THE MOST OUTSTANDING GROGGERS IS ONE IN BRONZA FROM RUSSIA, DATING FROM THE END OF THE 19TH CENTURY TO EARLY 20TH AT THE TIME OF THE POGROMS. THE RUSSIAN COSSACK IS DEPICTED WITH BLOCK AND CHAIN. HEBREW LETTERING TRANSLATES “CURSED BE HAMAN; CURSED BY THE EVIL ONES.” THIS GROGGER IS BELIEVED TO BE THE ONLY ONE OF TWO IN THE WORLD.

Another exceptional one in domestic sterling silver is 21” high with elaborate engravings. The inscription informs us that the megillah was purchased by friends of Alan Kent as a donation to Beth Hillel Synagogue. Most impressive is the fact that Kent was the person who inspired Rabbi Philip Lazowski to enter the Rabiniate. After years of study, Rabbi Lazowski served as Beth Hillel’s rabbi for 45 years, has written eight books, courses of study used in many Hebrew Schools, and is now a member of our Emanuel Synagogue.

The Judaic items in this exhibit are on loan from the Museum of Congregation Adath Israel in Middletown, the Abraham J. Feldman

Museum at Congregation Beth Israel, Rabbi Gary Atkins of Beth Hillel, Dr. Jonathan Tress of Tikvoh Chadasha Synagogue, Rabbi Yitzchak Adler of Beth David Synagogue, and Rabbi James Rosen of Beth El Temple. Congregants of our Emanuel Synagogue have contributed items as well.

The exhibit will remain in the cases until the Passover season when it will be replaced by the Judaic wood carvings of the late Herman Braginsky of New Haven, courtesy of his daughter, Professor Dorothea Braginsky. Originally from Copenhagen, Denmark, Braginsky started to carve wood after his retirement from his air-conditioning and refrigeration business. He discovered the thrill of carving wooden Judaica, and soon found all of his work in a gallery on Madison Avenue in Manhattan. His works include yads, Torah Arks, tzedakah boxes, esrog boxes, dreidels, animals found in the Pirke Avot, groggers, havdalah candleholders, and cylindrical holders for megillah scrolls. One of his holders sold for \$4,000.

Although Braginsky never had any formal art training, his artwork can be found the world over. One of his famous large mazzuzot is on the wall of the Great Synagogue in Jerusalem. Currently, his works are on exhibit at New York’s Yeshiva University Museum.

Assisting Gloria Bein in the setting up of the current exhibit were Joy Platt, Renee Zetoff, Cynthia Blayer, Susan Cohn and Selma Schwartz. Thanks also to Jeff Rudolph who made the signs.



President's Message, continued

Opportunity: Work with key lay leaders to come up with creative and fun fundraising ideas. Have a direct positive impact on revenue.

4. Marketing of gift card program.

Develop work plan to sell gift cards on Sunday mornings at family programs.

Objectives: Re-energize our sale of gift cards as an Emanuel fundraiser. Recruit others to sell gift cards on alternating Sunday mornings. Develop a marketing effort to explain these fundraisers which is a win-win for everyone.

Time requirements: 2-4 hours per month between now and May 30

Opportunity: Help improve the revenue we derive from the gift card program. Work with other lay leaders in a team oriented approach.

5. Communication Policy (Phase III) and Use of Information Technology (Phase 3).

Objectives: Revisit the Communication changes we have already implemented and come up with proposal for further changes (e.g. newsletter) .

Time requirements: One to two meetings with the Executive Director and Rabbi Small to focus on any issues by our new approach to communications. Make a proposal, and get feedback, from the Calendar, Communication and Collaboration group at its March 2010 meeting.

Opportunity: Continue to provide more effective communications to our members and the community. Help us to continue to reduce expenses and not waste resources.

6. Friday Night Shabbat Dinners. Help organize approximately 5 Friday night community dinners.

Objectives: Promote and plan the dinner.

Time requirements: 6-7 hours per month between November and March.

Opportunity: Help improve attendance and enjoyment at Friday

night services. Develop new approaches to attract more members. Create a true sense of community.

7. Annual Giving/Kol Nidre appeal. Help organize annual giving campaign.

Objectives: build upon the success and the potential of Email solicitations we developed in 2009. Organize lists for emailing by Board and follow up to make sure emails are sent. Guide Board through various steps in the solicitation process. Develop an Annual Giving pamphlet to be distributed to the congregation at the end of our 2010 fiscal year.

Time requirements: For Kol Nidre solicitations, 5-6 hours per month during June July and August. For Annual giving pamphlet approximately 30 hours during April, May and June time frame (overseeing layout, substantive materials and gathering lists of donors).

Opportunity: Work with key lay leaders and results will be enhanced revenue.

A gift that offers more than I ever imagined.

When my CD came due, I looked at different options. I wanted dependable income at rates that made sense and I was interested in supporting the work of The Emanuel Synagogue. Now I have a charitable gift annuity with unique advantages including:

AGE	SAMPLE RATE
90+	9.5%
85	8.1%
80	7.1%
75	6.3%
70	5.7%
65	5.3%

* Gift annuity rates are subject to change at any time and may vary depending on the timing of your gift. The Foundation reserves the right to approve the terms of any charitable gift annuity.

- Secure payments for my lifetime
- Ongoing tax benefits
- Knowing I'm ensuring the future of the Jewish community



Find out about the gift that gives back - a charitable gift annuity through the Jewish Community Foundation. Call the Jewish Community Foundation at 860.523.7460 today.



SCHOOL NEWS

by Judith T. Fox, Director of Education

All of us in The Emanuel Synagogue Religious School thank Sisterhood and Brotherhood and all the wonderful volunteers for, once again, treating us to a wonderful Chanukah Carnival. We also thank USY, Kadima, Beit Sefer Tichon and our 6th and 7th graders for creating and running the booths. Everyone had a great time!

We have several family programs coming over the next few months. On January 9, families of 4th, 6th and 7th graders will join for *Havdallah*. We will use spices that the 4th grade planted last spring in our Biblical Garden. On January 24, ADL will present Confronting Anti-Semitism to 7th graders and their parents and on January 31, Grade 3-5 families will learn about the Jewish organizations that serve our community.

In February, we move beyond the boundaries of our school for a program that will see 6th and 7th grade families learning about the mitzvah of *Tzfillin* during the World Wide Wrap on February 7th. We will present a Purim celebration for the entire congregation on Sunday, February 28th.

HELP US KEEP TRACK OF OUR COLLEGE STUDENTS!

Do you have a son or daughter who has graduated from high school and is soon going off to college? Please send their address, name of school, and email to carolyn@emanuel-synagogue.org so that we can keep in touch. Thanks!

PLEASE JOIN US...

Family Services in January & February:
Tot Shabbat: January 2 & February 6 at 10:00 a.m. – Chapel
KaHal: January 9, 16, 23 & 30 and February 6 at 10:30 a.m. – Chapel
Erev Shabbat Family Friendly Friday: January 8 at 7:00 p.m.

Family Programs in January and February:

Saturday Evening, January 9
 Grade 4, 6 and 7 *Havdallah*

Sunday, January 24
 Grade 7 Parents and Children – 10:00 a.m. -noon – Children arrive at 9:00 – Family program begins at 10:00. The children will join their parents at 11:00. **ADL presents “Confronting Anti-Semitism”**

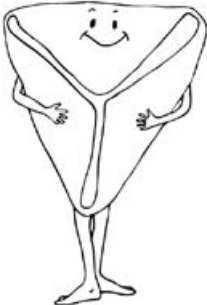
Sunday, January 31
 Grade 3-5 Family Program 10:00 a.m. -Noon – Children arrive at 9:00 – Family program begins at 10:00 – **“The Organizations That Serve Our Community”**

Sunday, February 7
Grade 6 and 7 Families – World Wide Wrap: Join us for a “how to wrap” session followed by services at 9:15 a.m.

Sunday, February 28
Purim Celebration

Watch your email for more detailed information.

PURIM FUN



OZREINU – SUPPORT AND STUDY FOR FAMILIES WITH CHILDREN WITH SPECIAL NEEDS

Ozreinu is a support group for families with special needs. It is facilitated by Judith T. Fox and includes Torah study and a lively exchange of ideas and advice from other parents. This year we have added a parallel group that children with special needs can attend while their parents are meeting. The children’s group is led by Tammy Krulewitz with the help of teen volunteers. Tammy is a special education teacher with experience in the classroom and in social settings with children with special needs.

Ozreinu will meet on January 17 and February 28 from 4:00 to 5:30p.m. There will be a charge of \$10 per child for member of The Emanuel Synagogue and \$15 per child for non-members. For more info or to register your child, please contact Judith Fox at 233-2774 or judyefox@emanuelsynagogue.org

VIVIAN & ROBERT SPIVAK LIBRARY CORNER

by Beth M. Polebaum

The library's collection has recently been augmented by book donations by synagogue and community members. Thank you very much to the following donors:

The Wu family
Paul Horowitz
Libby Pinkes's family
Jay Smith
Fay Mannheim

With monetary donations, I have purchased some wonderful children's books. One of the new Chanukah books, *Hanukkah at Valley Forge* by Stephen Krensky, sparked wonderful discussions. The author, using historical accounts indicating that George Washington knew about Chanukah from an encounter with a Jewish-American soldier from Poland, recreates the conversation the soldier and the general may have had. The discussion of the Maccabees' revolt alongside the American War of Independence provided revealing parallels.

I have also purchased a number of children's books by Alison Greengard. In each book, she presents a story from the Torah, using the Hebrew text and a child-friendly translation on each page. The artwork by Carol Racklin-Siegel is engaging. Each book also has a glossary in the back so the books are good vehicles for learning Bible stories and Biblical Hebrew.



You may borrow books on display and on the shelves by signing out the card and leaving it on my desk if I am not there. On Shabbat, you may use library books but please return them to the library or to the library mailbox in the office before you leave the building. Please do not take any books from my desk.

See you in the library!

PURCHASE SCRIP GIFT CARDS FOR MANY OF YOUR FAVORITE NATIONAL STORES AS WELL AS LOCAL SUPERMARKETS.

THE EMANUEL RECEIVES A PERCENTAGE OF EACH PURCHASE. A LIST OF MERCHANTS AND AN ORDER FORM IS AVAILABLE

IN OUR OFFICE AND ON OUR WEBSITE

WWW.EMANUELSYNAGOGUE.ORG

UNDER ABOUT US/GIVING/TZEDAKAH.

CREDIT CARDS, CHECKS AND CASH ARE ACCEPTED.



CHANUKAH CARNIVAL

I would like to thank all of the Middle school and High School students and Teachers that worked so hard on their booths for the Chanukah Carnival on December 13th. Everyone had fun the entire morning! Thank you to the many parents that helped with the planning, setup and execution of this event. Your efforts were greatly appreciated. Thank you to those families and to our local businesses in the Community that made donations to their child's booth and for our Raffle table. The proceeds from the silent raffle, directly benefit our Youth Groups of USY and Kadima by providing these groups with funds for events and scholarships. I especially want to thank the Minyanaires, Brotherhood and Sisterhood for their time and financial assistance in making this an annual Fund-raiser for the youth group! Thank you as always to our fabulous custodial staff for the hard task of setting up the auditorium and for the cleanup.

— Mrs. Nancy Fichman, Chairperson

MAZAL TOV! CONGRATULATIONS TO...

Harold & Ruth Alpert on the occasion of their 60th wedding anniversary

Gloria Bein on her birthday

Ronald & Stacey Dresner on the occasion of their daughter, Gabrielle, becoming a Bat Mitzvah

David Epstein & Sari Friedman on the occasion of their son, Leo, becoming a Bar Mitzvah

Deborah Guggenheim on the marriage of her son, Evan to Jocelyn Kirsch, and on her son, David receiving his doctorate

Ruth Hershman on her special birthday

Ellen Miller on the occasion of her son, Joseph Draper, becoming a Bar Mitzvah

Regina Miller on her birthday

Philip & Erika Nair on their new home

Saul Pasternack on his special birthday

Jessie Rosenthal on her 95th birthday

Iris Rosenberg on her special birthday

THE EMANUEL NETWORK

JOB LOSS? FINANCIAL TROUBLE?

THE EMANUEL NETWORK IS HERE FOR YOU!

CALL RABBI DAVID

SMALL AT 236-1275, EXT. 115, AND LEAVE A CONFIDENTIAL VOICE MAIL.

Community of CARING / Chesed

EMANUEL'S JANUARY & FEBRUARY B'NAI MITZVAH



*Max Gilden, son of
Bernard & Regina Gilden,
will become a Bar Mitzvah on
January 16, 2009.*



*Esther Schlossberg, daughter of
Philip & Karen Schlossberg,
will become a Bat Mitzvah on
January 23, 2009.*



*Zev Beigel, son of
Sara Kaplan & Ken Malley,
will become a Bar Mitzvah on
January 30, 2009.*



*Rebecca Baitch, daughter of
Shachar & Lisa Baitch,
will become a Bat Mitzvah on
February 6, 2009.*



*Rebecca Goldman, daughter of
Stephen & Kathy Goldman,
will become a Bat Mitzvah on
February 20, 2009*



*Ian Frank, son of
Robin Frank,
will become a Bar Mitzvah on
February 27, 2009.*

IF YOU SHOP AT THE CROWN... EVEN IF ONLY ONCE IN A WHILE...

EVEN IF YOU ONLY BUY ONE THING... EVEN IF YOU NEVER BUY "GIFT CARDS"...

**WHEN YOU BUY CROWN SCRIP JUST ONE TIME AT THE EMANUEL YOU
CAN "RELOAD" THE CARD RIGHT AT THE CROWN CHECKOUT COUNTER
WHENEVER YOU NEED TO AND THE EMANUEL GETS MONEY BACK FOR YOUR
EFFORT! THE CHALLAH FOR SHABBAT WILL TASTE TWICE AS GOOD!**



Community of ACTION / Tikkun Olam תיקון עולם

B'YADEYNU NEWS

by Louise C. Rosenberg

The Emanuel community continues to respond to the needs of others and exemplifies the concept that "it is better to give than to receive." B'Yadeynu organized four hugely successful drives at the start of the 2009-2010 season. All four drives exceeded our expectations. We are proud to share that volunteer support from the congregation was excellent. *Todah Rabbah* Emanuel community for all that you have done to make others' lives better.

For the fifth year, Emanuel sent Chanukah care boxes to American Jewish soldiers, both men and women, serving abroad. This year not only did soldiers serving in Iraq receive packages, but others that are stationed in Germany, Korea, and about to be deployed also were recipients.

The response to the "Wish Lists" of items by Emanuel members, cards created by Hebrew School children, and holiday decorations donated by others made the holiday quite meaningful. Organizing and packing the various plastic bags to fill each box was completed by volunteers of all ages. For some this was a family endeavor. To all who helped make this task move so quickly B'Yadeynu expresses our appreciation. Requests

for packages for soldiers are ongoing throughout the year. Please contact this committee if you are interested in sending notes or packages to soldiers overseas.

Sadly, over the past year, the need by many in the greater Hartford community for food has almost tripled. The response by Emanuel members was so great during the Thanksgiving holiday that over 90 turkeys and 250 bags of food were given to both FoodShare and Gifts of Love. Thanks to generous donations from our congregation, we were also able to supply the Kosher Food Pantry with 25 kosher turkeys. In addition, cash donations, large amounts of fresh produce and kosher items were also given to the Kosher Food Bank. Thanksgiving and the days afterwards were made easier by the kindness of Emanuel members. This committee will continue to respond to the needs of the hungry in our community throughout the year. Please let us know if you would like to become more involved in these efforts.

Our other fall activities included co-sponsoring an evening with Ethan Bronner, New York Times Israel Bureau Chief at the University of Hartford. We continue to look for thought-provoking speakers to bring to our community. B'Yadeynu and its members remain active in the CT

Coalition to Save Darfur and were present at the second annual Light on Sudan on the Shortest Day program on Dec. 21.

Your generous contributions to B'Yadeynu's discretionary fund allow us to help those in need as well as to provide educational programming to our community on important and timely subjects. *Todah Rabbah* for your continued support!

With winter upon us, B'Yadeynu is focusing on activities for this Spring including the Israel Solidarity Committee's Discover Israel Day on Sunday, May 23rd from 10-12:00 a.m. This promises to be both an educational and enjoyable event for families and congregants. More details will follow in the March newsletter.

Please join other Emanuel synagogue members in leading Friday evening Shabbat services and sharing Shabbat joy with residents at the Hebrew Home. Our next services will be January 15 and February 19. Services are from 7-8 p.m. For more information, please contact Pam Garry at 523-5254 or pgarry@comcast.net. Your participation, children and adults, regardless of your knowledge of Hebrew or the service, will help to make it a warm-hearted and spirited service for everyone.

TAX LETTERS WILL BE SENT OUT FROM THE SYNAGOGUE PRIOR TO THE END OF JANUARY TO HELP YOU WITH THE PREPARATION OF YOUR TAXES. WE DO APPRECIATE YOUR DONATIONS TO THE EMANUEL THROUGHOUT THE YEAR.

PUBLICATION SCHEDULE FOR *THE EMANUEL NEWS*

We have combined our January/February newsletters for many years now. In an effort to conserve paper, cut down on postage and more importantly serve our congregation in a more efficient manner, we are now going to begin combining newsletters throughout the year. We will now be printing and sending the following issues:

January/February

March/April

May/June

July/August

September/October

November/December

Please make sure to read these editions carefully to find out everything that is going on in your Emanuel community.

News From The BROTHERHOOD

BROTHERHOOD NEWS

by Michael Cohan

Emanuel Synagogue Brotherhood joins the World Wide Wrap on Sunday, Feb. 7, 2010

On Sunday, February 7, 2010, Conservative Jews around the world will celebrate the mitzvah of Tefillin at their morning minyan, joining thousands of others in the 10th annual "World Wide Wrap" sponsored by the Federation of Jewish Men's Clubs (FJMC).

We here at Emanuel Synagogue are thrilled to announce that our community will be part of the World Wide Wrap as part of the regular Sunday morning Minyan at 9:15 a.m.

"If you've never done it, putting on tefillin looks hard. Yes, it's harder than putting on your talit. But it's not as hard as learning to ride a bike." The mitzvah of wrapping Tefillin is one of the most basic Jewish rituals. Yet for many of us it is removed from our daily lives; somehow a relic of the past rather than a vibrant and vital spiritual experience.

The Emanuel Synagogue Brotherhood, Rabbi David Small, Cantor Sanford Cohn and Ritual Director Moshe Pinchover are working closely to encourage each of you to be on hand and participate in this mitzvah. We realize that for some of you it may be a new or unfamiliar experience. There will be several people on hand to assist you in putting on tefillin. With a little practice you will become a regular.

Join with our people! Participate in the Mitzvah! Experience the wonder and joy!

For further information contact Don Miller at 860-233-0175. Like riding a bike, once you get the basics down, and practice a little, you'll never forget.

SEE YOU AT THE 'WRAP'!

BROTHERHOOD CALENDAR OF EVENTS

January 10	Sunday Breakfast Meeting, 9:00 a.m., Dr. Leon Chameides; Topic: Jewish Galtsia
January 12	Cooking Classes for the Guys – Cooking with Pasta – 6:30-8:30 p.m.
February 7	Sunday World Wide Wrap, followed by breakfast, Professor of Religion Mark Silk, Trinity College; Topic: Religion and Public values
February 13	Brotherhood Shabbat and Kiddush, 9:00 a.m.
March 7	Sunday Breakfast Meeting, 9:00 a.m., Lars Guldager, Danish Holocaust Survivor
March 23	Evening with Ritual Director Mosche Pinchover, 7:30 p.m.
April 9	Shabbat Service followed by dinner honoring Israeli Robotics High School students, 6:00 p.m.
April 11	Brotherhood/School Holocaust Program, 6:00 p.m.
May 9	Sunday Breakfast Meeting, 9:00 a.m., Dan Leibowitz, Men's Basketball coach at University of Hartford
June 8	Brotherhood Barbecue, 6:00 p.m.
June (date TBD)	Laymen's Institute at Camp Ramah

DELICIOUS FOOD AT THE BROTHERHOOD MEMBERSHIP DINNER



This picture was taken on October 27, 2009 at the Brotherhood Paid-Up Membership Dinner where Howie Schwab from ESPN was guest speaker.

ARE YOU A BROTHERHOOD MEMBER?

If you are, we welcome you back for another great year! If not, please consider becoming one today.

Have you become a new member of the Emanuel, within the last 6 months? If so, your first year of Brotherhood membership is free.

THANK YOU TO THE FOLLOWING BROTHERHOOD BREAKFAST SPONSORS IN NOVEMBER:

- Mike Altschuler** in honor of his granddaughter's 5th birthday
- Alan Berkowitz** in honor of his son Ethan, and daughter Hannah, making the honor roll at school
- Ori Clare** in honor of Saul Shemkovitz and Ken Simon getting his group safely through Israel
- Mike Cohan** in memory of his father-in-law Saul Korduner
- Bruce Cohen** in honor of his son becoming a first time blood donor
- Hal Cohen** in honor of the anniversary of his wife Donna's Bat Mitzvah
- Marshall Cohn** in honor of his grandchildren's upcoming birthdays
- Sam Cohn** in honor of his 16th wedding anniversary
- Barry Feigenbaum** in honor of Brotherhood President Sid Kaye
- Ted Fox** in memory of Neil Macy's wife Irma
- Larry Froot** in honor of his wife, Gene Grass' birthday
- Sid Kaye** in honor of Jonathan Harris
- Tom Mastronarde** in honor of his grandchildren, Ethan, Carrie, Shayna, Zephaniah, Aleexa
- Jack Merkin** in honor of the birthday of his wife Joyce
- Don Miller** in honor of his 42nd anniversary with his wife Regina
- Jeffrey Renert** in honor of the Brotherhood and the Brotherhood Cooking Class
- Jeff Rudolf** in honor of Neil Macy attending the breakfast, his son Aaron's first job at Walgreens Distribution Center, and the Brotherhood Cooking Class
- Saul Shemkovitz** in honor of his 28th wedding anniversary
- Bob Tellar** in memory of Harry and Sylvia Tellar
- Jeremy Weingast** in honor of his anniversary with his wife Francene
- Ray Weinstein** in honor of the birth of his granddaughter Lily Rose Weinstein

MINYONAIRES MEMO by Judy Silver

It's the new year...

It's the new you...

It's your new mitzvah....

It's your new commitment...

It's your new way of making a
difference...

It's the year for YOU to be a
part of the daily minyan...
(even just every once in a while)

You may be just the ONE
we are waiting for to make TEN!

MINYONAIRE BREAKFAST SPONSORS

Steve & Amy Dembo in honor of their daughter,
Rachel, becoming a Bat Mitzvah

Donna Edelstein and Jay Edelstein in honor of
their son, Nathan, becoming a Bar Mitzvah

Thomas & Nicole Fromson in honor of their
daughter, Julia, becoming a Bat Mitzvah

Emanuel Minyonaires in honor of Gloria Bein's
birthday

Carol Hopkins in memory of her brother, Steven
Stolman and in honor of Gloria Bein's birthday

Ira Levin in memory of his father, David Levin

Neil Macy to mark the end of Shloshim for his wife,
Erma

Avra Novarr and Barbara Steinfeld to mark the
end of Shloshim for their mother, Belle Grodinsky

The Pinkes Family in memory of their father, Sam,
on his Yahrzeit and in memory of their mother,
Libby

Todd & Marci Silverhart in honor of their son,
Reid, becoming a Bar Mitzvah

Correction: Marci Korwin and David Greenfield
sponsored the breakfast in honor of their son,
Jonathan, becoming a Bar Mitzvah

NEHAMA

CONDOLENCES TO THE FAMILIES OF...

Jack Solomon, husband of Marjorie Solomon

Max Zetoff, father of Michael Zetoff and Renee Zetoff

NEWS FROM THE EMANUEL JOB CLUB

by Cookie Melito

CREATING EFFECTIVE RESUMES

A resume should be accomplishment-oriented rather than responsibility driven. Think of the "PEP Formula," Profitability, Efficiency, and Productivity. How did you contribute to profitability through increased sales? How did you contribute to efficiency such as through cost reduction percentages? How did you contribute to productivity, such as through successfully motivating your team?

Use the PAR or SAR technique in which you describe a Problem or Situation that existed in a given job, tell what Action you took to fix the problem, and what the Result was. Remember to quantify (use numbers) and insert superlatives (the first, the only, the best) in your description. Make sure each accomplishment is relevant to the type of job you seek.

If you need help in listing your relevant accomplishments come join us at The Emanuel Job Club on Tuesday mornings.

*Learn more about The Emanuel Job Club
at www.emanuelsynagogue.org under
Getting Involved/Action Groups.*

Gesher Hachaim – Bridge of Life JEWISH BEREAVEMENT SUPPORT GROUP

**A free support group for individuals
grieving the loss of a loved one.**

Six sessions, beginning January 5, 2010

3:30 – 4:30 p.m.,
first and third Tuesday of every month

West Hartford Senior Center,
15 Starkel Road, in TV Room

Support group facilitated by:
Susan G. Balaban M.E.d

For more information or to register, please
contact **Nichol Burris** at (860) 493-7328.

Sponsored by
WEINSTEIN
Mortuary

VNA HealthCare

 HARTFORD HEALTHCARE

News From The SISTERHOOD

SISTERHOOD NEWS

by Debbie Bettan

As we leave 2009 behind and move on to 2010 we hope everyone had a bright and joyous Chanukah with family and friends. We are looking forward to a very busy and exciting calendar of events to start off the winter months.

Thank you to all of the volunteers who helped with the Chanukah gift wrapping at Barnes & Noble on December 6 and December 23. Reesa Olins was terrific at organizing the volunteers for the specific time slots. Our small fundraisers go a long way.

Thank you to all the volunteers who helped with the Annual Chanukah Carnival. The proceeds help fund the Youth Activity Programs so that there are more opportunities for our Youth to attend. Thank you also to Nancy Fichman for her dedication and for chairing this event.

January 9 brings us to Sisterhood Shabbat. If you have not been contacted and would like to participate, you can contact Elysa at 860-233-6626. Yasher Koach to Elysa Graber-Lipperman and Lisa Levy for a wonderful job of coordinating the various parts of the service. Thank you to Cantor Cohn for your advice and guidance.

Mark your calendars for January

23 as we are having our 4th Annual Comedy Night. Please join us for a fun-filled night of comedy, music and food. Thank you to Fay deHaas and Reesa Olins and their entire committee for organizing this great program. This year a portion of our proceeds will be donated to the Alzheimer's Association of Greater Hartford. Call Fay for any questions at 860-690-0998.

Our joint program with Beth El Sisterhood is slated for January 26 with a snow date on January 27. This year Emanuel Sisterhood is hosting the program. Thank you to Gloria Bein for being our liaison between the two Sisterhoods. Our speaker will be the artist who is currently displayed in the showcase in the Synagogue lobby.

As we move into February we will again work with the Brotherhood and Minyonaires at the Purim Café on February 27. Join us for a fun evening as we listen to the Megillah reading and have some great desserts.

Sisterhood has gone Green. We are trying to do most of our communication by email or eblast. If you would prefer to have snail mail please let us know by contacting Melissa at 860-233-7120 or Debbie at 860-231-1861. As always we welcome new and old members to join us.

The entire Sisterhood Board wishes everyone a very safe and healthy winter season.

CALLING ALL KNITTERS AND WANNA BE'S: ALL ARE INVITED TO NEW KNITTING CLUB

COME JOIN OUR KNITTING CLUB, LOCATED AT 71 HILDALE RD. THE CLUB WILL MEET THE SECOND THURSDAY OF EACH MONTH AT 7PM, HOSTED BY DANIELLE WU, AN EXPERIENCED KNITTER. BRING YOUR NEEDLES AND YARN, OR JUST YOURSELF IF YOU NEED ADVICE ON GETTING STARTED! OUR CROCHETING FRIENDS ARE ALSO WELCOME, OF COURSE!

CONTACT DANIELLE WU,
(860) 236-1275, EMANSYN@
EMANUELSYNAGOGUE.ORG

Start planning and saving now! The Emanuel Tag Sale is scheduled to take place August 5, 6 and 8 of 2010. More news will follow in a later newsletter.

GIFT SHOP NEWS

by Lisa Tesser

We are wishing our entire Emanuel family a very happy and healthy New Year! This winter come out of the cold and check out our 15% OFF DISCOUNT STOREWIDE FOR JANUARY AND FEBRUARY. We have many beautiful gift items for all occasions. Shop for a new tallit, kippahs, jewelry, kiddush cups and so much more. If your child is becoming a Bar Mitzvah, we can order them tefillin. The gift shop is open on Sundays when religious school is in session from 10 a.m. - 12:15 p.m. and during the week when the synagogue office is open. We accept checks, cash, mastercard and visa. We look forward to your visit to the gift shop.

We are making every effort to reach out to members via email. If you have an email address and are not getting information from us...PLEASE EMAIL carolyn@emanuelsynagogue.org so that we can add you to our list. This is also important if your email address has changed. Thank you.

DONATIONS FROM THOUGHTFUL PEOPLE

BEIN SCHOLAR-IN-RESIDENCE FUND

In Memory of:

Beloved father-in-law, JACOB SCHLOSS
by Sylvia Schloss

In Appreciation of:

GLORIA BEIN for being the "floor Gabbai" for Rachel's Bat Mitzvah
by Steven & Amy Dembo

CARING/CHESED COMMITTEE FUND

In Appreciation of:

THE CARING COMMITTEE for their many acts of kindness and thoughtfulness
by Leon & Rosalyn Darefsky

In Memory of:

LOUIS WEINER

by Dr. Irving & Fran Waltman

Beloved cousin, ELEANOR BERNET, on her Yahrzeit

by Sylvia Schlossberg and Family

Beloved aunt, ESTHER GLADSTEIN, on her Yahrzeit

by Sylvia Schlossberg and Family

In Honor of:

SAUL PASTERNAK on his special birthday

by Carolyn & David Topol

The marriage of EVAN GUGGENHEIM to

JOCELYN KIRSCH

by Carolyn & David Topol

DAVID GUGGENHEIM receiving his doctorate

by Carolyn & David Topol

CANTOR COHN'S DISCRETIONARY FUND

In Appreciation of:

CANTOR COHN & RHONDA HOLTMAN for

preparing Joshua & Jessica for their B'nai Mitzvah

by Steve & Ruth Graft

CANTOR COHN for officiating at the bris and baby

naming

by Sara & Ken Malley

CANTOR COHN for helping prepare RACHEL

DEMBO for her Bat Mitzvah

by Steven & Amy Dembo

CANTOR COHN for his thoughtfulness &

consideration

by Neil Macy

In Honor of:

CANTOR COHN on his 10th anniversary at The

Emanuel Synagogue

by Lisa & Michael Lenkiewicz

by Rubin & Sylvia Goldstein

by Barbara & Howard Nair

In Memory of:

ROBERT EILENBERG

by David & Elise Silverman

MAX ZETOFF

by Sharon Lea Sperling

HILDA RIBACK

by Sharon Lea Sperling

DIRECTOR OF EDUCATION'S DISCRETIONARY FUND

Wishing Good Health to:

PETER MEHLMAN

by Carolyn & Michael Levine

In Appreciation of:

JUDITH FOX for helping prepare RACHEL DEMBO

for her Bat Mitzvah

by Steven & Amy Dembo

EXECUTIVE DIRECTOR'S DISCRETIONARY FUND

In Appreciation of:

SUZANNE CONNELL for her help planning

RACHEL DEMBO's Bat Mitzvah celebration

by Steven & Amy Dembo

FLOWER FUND

In Memory of:

ATTY. HAROLD GERSTEN

by Adelle, Ceil, and Sam Gersten

GENERAL FUND

In Honor of:

GAIL & RAY WEINSTEIN, on the birth of their

granddaughter, LILY ROSE

by Peggy & Alan Mendelson

CANTOR COHN

by Marlene & Bob Levine

BILL PRENSKY's Aliyah on Yom Kippur

by Joan Prenskey

Wishing Good Health to:

PETER MEHLMAN

by Marlene & Bob Levine

In Memory of:

LOUIS WEINER

by Dan & Joni Fine

by Joan & Bill Prenskey

by Fran & Phil Feltman

by Sarah Friedman

by The West Hartford Regents

by Sivia Loria

by Richard Morgenstern

by Jackie & Doug Husid

by Cal Mass

HELEN ROSENFELD

by Albert Rosenfield

MAX ZETOFF

by Dan & Joni Fine

by David & Karen Zetoff

by Lynn & Jack Cohen

by Rosalie & Dick Zetoff

Beloved mother-in-law and father-in-law, ESTHER &

ABRAHAM SCHLOSSBERG, on their Yahrzeits

by Sylvia Schlossberg and Family

GREEN BUILDING FUND

In Memory of:

RICHARD MASTRONARDE

by Carolyn & Michael Levine

by Carolyn & David Topol

Wishing Good Health to:

CAROLYN TOPOL

by Barbara & Howard Nair

PETER MEHLMAN

by Carolyn & David Topol

In Honor of:

RACHEL DEMBO becoming a Bat Mitzvah

by Carolyn & David Topol

KEMLER TORAT HAYIM FUND

In Honor of:

JULIA FROMSON becoming a Bat Mitzvah

by Sharon Lea Sperling

RABBI LAZOWSKI'S DISCRETIONARY FUND

In Honor of:

RUTH LAZOWSKI for her presentation to the Rosh

Hodesh Group

by The Rosh Hodesh Group Members

In Appreciation of:

RABBI LAZOWSKI for his classes on the Book of Job

by Alan Parker

LIBRARY FUND

In Memory of:

LOUIS WEINER

by Libbian & Jerry Cohen

RICHARD MASTRONARDE

by Jerry & Barbara Sperber

JOSEPH WU

by Phyllis & Harvey Silverman

ROBERT ARONHEIM

by Phyllis & Harvey Silverman

FAYE WACHTEL

by Bill & Muriel Zeldis

NEIL & ERMA MACY ACCESSIBILITY FUND

In Memory of:

ERMA MACY

by Dr. & Mrs. Carl Mandell

by Edward & Trudy Milikow

by Vivian & Jerry Marks

by Wendy Wortzman & Family and Ken Dantzig & Family

by Anne Jellison and Richard Celio

Beloved sister-in-law, ERMA MACY

by Suzanne Macy

Beloved brother-in-law, LOUIS SCHLOSS, on his

Yahrzeit

by Sylvia Schloss

MINYONAIRES FUND

In Appreciation of:

THE MINYONAIRES for their thoughtfulness

by Leon & Rosalyn Darefsky

THE MINYONAIRES for making our daughter,

RACHEL DEMBO, feel so welcome as she became a

Bat Mitzvah

by Steven & Amy Dembo

In Memory of:

LOUIS WEINER

by Anne & Leonard Goldman

Beloved uncle, LOUIS MARKS, on his Yahrzeit

by Vivian & Jerry Marks

DR. DAVID KAVALER

by Celia Kavalier

MARK ASMAR

by Pamela & David Garry

Our beloved father, CHARLES FRANK

by Pamela & David Garry

Beloved father, JACOB WEBER, on his Yahrzeit

by Barbara Canter

Beloved father & husband, EDWARD CANTER, on his

Yahrzeit

by Barbara, Alan, & Steven Canter

MAX ZETOFF

by The Emanuel Minyonaires

by Rhoda Kaplan

MIRIAM KANE

by Carolyn & Robert Isakson

Beloved mother, EVA RUTSTEIN

by Sylvia & Norman Cohen

Our dear friend, LYNNETTE BASS

by Sylvia & Norman Cohen

Beloved son & brother, LENNY NEIKRIE

by Renee Neikrie

IDA CANTER, on her Yahrzeit

by Barbara Canter

Beloved brother and uncle, HERMAN "HY" SIEGEL,

on his Yahrzeit

by Sylvia Schlossberg and Family

Beloved mother, FRANCES LANDERMAN, on her

Yahrzeit

by Muriel Poriss

Beloved parents, SARA & ARON KRAVSHIK

by Bella Fink

In Honor of:

BARBARA & GERALD SPERBER on the engagement

of MICHAEL to ELENA CHAFFETZ

by Bella & Judd Fink

GLORIA BEIN on her birthday

by The Emanuel Minyonaires

DON & REGINA MILLER on their anniversary

by Renee Neikrie

Our parents, SYLVIA & NORMAN COHEN, on their

61st anniversary

by Helene & Gary Fisher and Larry & Julie Cohen

BELLA & JUDD FINK, on the engagement of their

daughter, LISA

by Hedyth & Bob Fishman

SORREN SMITH becoming a Bar Mitzvah

by Sam & Susan Cohn

Wishing Good Health to:

CHARLOTTE BRICK

by Pamela & David Garry

MUSIC FUND

In Memory of:

LOUIS G. WEINER

by Mr. & Mrs. Andrew Elkin

In Honor of:

HAROLD & RUTH ALPERT on their 60th

anniversary

by Edith "Edie" Sherman

(continued next page)

PRAYER BOOK FUND

In Memory of:

LOUIS G. WEINER

by Sydney, Janice & Michael Elkin
My beloved parents, RUTH & CHARLES SIMMONS
by Alison Rudolph
ARLYNNE STADTMORE
by Alison Rudolph

RITUAL DIRECTOR'S DISCRETIONARY FUND

In Appreciation of:

MOSHE PINCHOVER

by Joanne Rome
by The Flescher Family

In Memory of:

CELA EISENBERG

by Ellen & Howard Rosenberg

SCHOLARSHIP FUND

In Honor of:

NATHAN EDELSTEIN becoming a Bar Mitzvah
by Sonnie & Greg Carpenter

JULIA FROMSON becoming a Bat Mitzvah
by Susan & Allen Kallor

SIEGAL GARDEN FUND

In Honor of:

SEYMOUR KAPLAN on his 90th birthday

by Estelle & Myron Freed
by Edie & Marshall Kalin

SISTERHOOD TRIBUTE FUND

In Honor of:

JANE & JIM LACKMAN, on the occasion of their
grandson, MASON, becoming a Bar Mitzvah
by Rabbi Howard & Sandra Meridy

In Memory of:

MAX ZETOFF

by Rabbi Howard & Sandra Meridy

RABBI SMALL'S DISCRETIONARY FUND

In Appreciation of:

RABBI SMALL for Joshua & Jessica's B'nai Mitzvah
by Steve & Ruth Graff

RABBI SMALL

by Joanne Rome

RABBI SMALL for leading the baby naming and bris
by Sara & Ken Malley

RABBI SMALL for helping prepare RACHEL
DEMBO for her Bat Mitzvah

by Steven & Amy Dembo

RABBI SMALL for his thoughtfulness and consideration
by Neil Macy

In Memory of:

LILY WEINSTEIN

by Trudy Milikow

BELLE GRODINSKY

by Fay & Ernie deHaas

IRVING HABER

by Fay & Ernie deHaas

CARL SILVERMAN

by Judy & Richard Levy

MAURICE KATES and MORTON WATSTEIN

by Maxine & Richard Kates

MAX ZETOFF

by Roberta & Frank Amundsen and Emily Wayne

Beloved parents, HARRY & SYLVIA TELLAR

by Robert J. Tellar

Wishing Good Health to:

JUDITH & HOWARD SHEVRIN

by Fay & Ernie deHaas

In Honor of:

RACHEL DEMBO becoming a Bat Mitzvah

by Fay & Ernie deHaas

Our granddaughter, HOLLY BARDEN's Aliyah on Yom
Kippur

by Rita & Milton Rosenberg

ERIKA & PHILIP NAIR on their new home

by Barbara & Howard Nair

HELEN MEHLMAN on her special birthday

by Beth & Garon Camassar

NATHAN EDELSTEIN becoming a Bar Mitzvah

by Allan & Judith Jordan

DR. STEVEN SELDEN

by Cheryl & David Epstein

SOCIAL ACTION/B'YADEYNU FUND

In Memory of:

BELLE GRODINSKY

by Dick & Doris Nabel

YOUTH ACTIVITY FUND

In Honor of:

The marriage of EVAN GUGGENHEIM to

JOCELYN KIRSCH

by Joanne & Saul Pasternack

THE ENDOWMENT FUNDS...

MARK & LINDA ASMAR FUND

In Memory of:

MARK ASMAR

by Tammy & Marc Levine

MIMI & JACK BASSOK FUND

In Memory of:

LOUIS WEINER

by Mimi & Jack Bassok

Beloved mother, SARAH BASSOK

by Mimi & Jack Bassok

Beloved brother, LOUIS WEINER

by Rita Winer

LOUIS & ETTA BECK FUND

In Memory of:

ETTA BECK, on her Yahrzeit

by Saul & Joanne Pasternack

SUE & BRUCE BERGMAN FUND

In Memory of:

Beloved father, SAUL C. BERGMAN, on his Yahrzeit

by Sue & Bruce Bergman

CARL SILVERMAN

by Sue & Bruce Bergman

BROTHERHOOD ENDOWMENT FUND

In Appreciation of:

Our intrepid driver, SAUL SHEMKOVITZ, and to
KEN SIMON for our Israel trip

by Michael Levine & Ori Clare

EMANUEL BROTHERHOOD ENDOWMENT FUND

DO YOU WISH TO MEMORIALIZE A
YARTZEIT? IS A SPECIAL BIRTHDAY
OR ANNIVERSARY IN YOUR FAMILY?
IS THERE A BAR/BAT MITZVAH TO
COMMEMORATE? WHATEVER THE
OCCASION, CONSIDER DONATING
TO THE EMANUEL SYNAGOGUE
BROTHERHOOD ENDOWMENT
FUND. CONTRIBUTIONS MAY
BE MADE TO THE EMANUEL
BROTHERHOOD ENDOWMENT
FUND FOR THE FUTURE BENEFIT OF
THE EMANUEL SYNAGOGUE
AND ITS MEMBERS. PLEASE
CONSIDER GIVING GENEROUSLY
AND GIVING OFTEN. ALL
DONATIONS TO THIS FUND SHOULD
BE PAYABLE TO THE EMANUEL
SYNAGOGUE BROTHERHOOD
ENDOWMENT FUND.

In Honor of:

TEHILA OXENHANDLER's mitzvah of repairing my
tallit given to me by my great-grandfather
by Brian Becker

In Memory of:

GEORGE SIMON

by Ken Simon

JEROME & ELEANOR CAPLAN FUND

In Memory of:

Beloved father-in-law, MURRAY CAPLAN, on his

Yahrzeit

by Eleanor N. Caplan

SAMUEL H. & PAULINE R. COHEN FUND

In Honor of:

IRIS ROSENBERG on her special birthday

by Hyla & Harry Sklar

by Diane, Todd, Sydney & Paige Bigelow

by Jodi, David, Josh, Adam and Hannah, Susan,

Marji and Jeff, and Betsy and Robert

The birth of LILY ROSE WEINSTEIN

by Hyla & Harry Sklar

In Memory of:

ERMA MACY

by Hyla & Harry Sklar

ELKIN FAMILY FUND

In Memory of:

MAX ZETOFF

by Jan & Syd Elkin

HERBERT & ELAINE EPSTEIN FUND

In Memory of:

JACK SMITH

by Elaine Epstein & Reuben Cutler

Beloved father & grandfather, BENJAMIN SLUTZKIN

by Elaine Epstein and Family

ELIOT & RANDIE FIERBERG FUND

In Honor of:

CANTOR COHN's anniversary, with love & admiration
by Randie, Eliot, Ruthie, Joseph, and Emma Fierberg

GENERAL ENDOWMENT FUND

In Memory of:

RICHARD MASTRONARDE

by Janet Wallans

SAMUEL WALLANS, on his Yahrzeit

by Janet Wallans

VICTOR & LILLIAN HARRIS FUND

In Honor of:

DAVID & MERLE HARRIS

by Bob & Elizabeth Pressman

RABBI NATHAN & LOTTE HERSHFIELD FUND

In Memory of:

SANFORD LINDY

by Rabbi Nathan & Lotte Hershfield

MELVIN & EDITH KATZMAN FUND

In Honor of:

Our sister, RUTH HERSHMAN, on her 90th birthday

by Edie & Mel Katzman

In Memory of:

JEAN BRODER

by Edie & Mel Katzman

ARTHUR & BEATRICE KORET FUND

In Memory of:

HARRY SIEGEL

by Pearl Teicher Manne and Louis Manne

MICHAEL S. & CAROLYN W. LEVINE FUND

In Honor of:

MARK LEVINE's engagement to RONNIE

GRINBERG

by Debbie & Peter Mehlman

MORRIS & EDITH MANCOLL FUND

In Memory of:
HELENE ISAKSON
by Anita & Bill Mancoll

SEYMOUR & JUDY MELNICK FUND

In Appreciation of:
DR. SEYMOUR MELNICK
by The Flescher Family

ALAN & PEGGY MENDELSON FUND

In Memory of:
ERMA MACY
by Peggy & Alan Mendelson

DONALD & REGINA MILLER FUND

In Honor of:
REGINA and ADVA's birthdays
by Janet Wallans

HAROLD & GLADYS MONDSHEIN FUND

In Memory of:
MAX ZETOFF
by Gladys Mondschein
JACOB MONDSHEIN
by Susan Mondschein Tejada

SAUL & JOANNE PASTERNAK FUND

In Honor of:
SAUL PASTERNAK on his 75th birthday
by Joyce & Mickey Libbin
by Marshall Shakun & Laurie Shakun and Harlan Shakun & Mary Anne Steadman
by Meryl & Elliott Rosenberg
by Norton & Mindelle Seltzer

In Memory of:
Beloved mother, PAULINE KAPLAN, on her Yahrzeit
by Joanne & Saul Pasternack

PINKES FAMILY FUND

In Honor of:
SAMANTHA PINKES becoming a Bat Mitzvah
by Selma Gordon

In Memory of:
DR. SAM PINKES
by Andrew & Suzanne Pinkes

RALPH ROSENBERG & HILDA SLIVKA FUND

In Memory of:
Beloved brother, JACK SLIVKA
by Hilda Slivka

SCHEINBLUM/FIERBERG FUND

In Memory of:
PAUL SCHEINBLUM
by Susan R. Fierberg & Howard Scheinblum

HERBERT & JUDY SILVER FUND

In Memory of:
Beloved father of Judy Silver, ORVILLE MILLER, on his Yahrzeit
by Herb & Judy Silver
Beloved father of Herb Silver, BEN SILVER, on his Yahrzeit
by Herb & Judy Silver

STEVEN & ELYSE SLITT FUND

In Memory of:
Beloved father & grandfather, DR. SIDNEY L. CRAMER, on his Yahrzeit
by Elyse & Steven Slitt, Erin, Gavin, Austin and Kirstin

VIVIAN & ROBERT SPIVAK FUND

In Memory of:
Our beloved aunt, ESTHER SPIVAK HIMELFARB, on her Yahrzeit
by Arlan Lieblick & Melton Spivak
Our beloved uncle, JOSEPH SPIVAK, on his Yahrzeit
by Arlan Lieblick & Melton Spivak
Our beloved father, ROBERT H. SPIVAK, on his Yahrzeit
by Arlan S. Lieblick & Melton L. Spivak
Our beloved grandfather, JACOB BERSON, on his Yahrzeit
by Arlan S. Lieblick & Melton L. Spivak

IRVING & IRENE STARR FUND

In Memory of:
LOUIS WEINER
by Irene Starr
My beloved husband, IRVING STARR
by Irene Starr

In Honor of:
BERNICE WALDMAN on her special birthday
by Irene Starr
CANTOR COHN's 10th anniversary at The Emanuel
by Irene Starr

TURKEN/WEINGAST FUND

In Memory of:
ERMA MACY
by Francene & Jeremy Weingast
RICHARD MASTRONARDE
by Francene & Jeremy Weingast
BELLE GRODINSKY
by Francene & Jeremy Weingast

In Honor of:
GAIL & RAY WEINSTEIN on the birth of their granddaughter, LILY ROSE
by Francene & Jeremy Weingast

ABE & SYLVIA WALDMAN, KAYE & SAMUELS FUND

In Honor of:
BARBARA & DAVID BROWN on the birth of their granddaughter, LILA BROWN
by Karen & Sid Kaye

RAYMOND S. & GAIL WEINSTEIN FUND

In Honor of:
The birth of LILY ROSE, daughter of ALAN & PAULIE WEINSTEIN, granddaughter of GAIL & RAY WEINSTEIN
by Cary & Beth Lakenbach
by Carolyn & Michael Levine
by Eve & Ed Fishman
by Elaine & Rob Siegel
The birth of our granddaughter, LILY ROSE, and her parents, PAULINE & ALAN
by Gail & Ray Weinstein
DR. & MRS. DAVID SHAMASH on the birth of their granddaughter, SASHA
by Gail & Ray Weinstein
DR. & MRS. JUDD FINK on the birth of their grandson, ALEXANDER AARON
by Gail & Ray Weinstein

In Memory of:
My beloved grandfather, PHILIP STEIN
by Gail Weinstein

EMANUEL VOICES IN THE COMMUNITY

The Emanuel choirs, under the direction of Cantor Cohn, spread the message of Chanukah to the community. On Sunday morning, December 13, the **Adult Choir** performed at the Hebrew Home. Later that day, our **Junior Choir** sang at a Chanukah party at the St. Mary Home. The next day, they lit the Hanikiya and sang at the Crown Market, a first for our community. Yasher Koach and thanks to all who lent their time and talent to these important events.

Joy Of Food, LLC
Kosher Accommodating/Catering
Paul & Debbie Betton

27 Timberwood Road
West Hartford, Connecticut 06117
Phone/Fax: (860) 231-1861
Cell: (860) 798-9388
E-mail: joyoffood@comcast.net




 **CRUISE PLANNERS™**
Independently Owned & Operated
Fay E. deHaas
Cruise & Tour Specialist

Local: 860-206-8244
Toll-Free: 888-601-1808
Fax: 860-231-0190

fdehaas@cruiseplanners.com
www.kreativeworldcruises.com

CLIA West Hartford, CT


 **RBC Wealth Management**

Daniel Fine
Senior Vice President -
Financial Consultant

20 Church Street, Suite 2300
P.O. Box 1900
Hartford, CT 06144-1900

Tel.: 860-241-8600
Fax: 860-241-8667
Direct: 860-241-8680
Toll Free: 866-281-3549
daniel.fine@rbc.com

RBC Wealth Management,
a division of
RBC Capital Markets Corp.,
Member NYSE/FINRA/SIPC

 **LPL Financial**

Shafer Investment Management Co. LLC
Glenn M. Shafer, MBA
Investment Representative

18 North Main Street
West Hartford, CT 06107
glenn.shafer@lpl.com
www.lpl.com/glenn.shafer

860 521 4531 office
860 521 3148 fax

Securities offered through LPL Financial Member FINRA/SIPC

Proud Publisher of
J.M. Communications
Financial News!

NEWSLETTERS ♦ BROCHURES ♦ ADVERTISEMENTS
LETTERHEADS ♦ BUSINESS CARDS ♦ LOGOS
ANNUAL REPORTS ♦ DIRECTORIES ♦ FORMS
...IN FACT, ANYTHING IN PRINT!

PHONE: (860) 454-8922 JMILLS@APPLEISP.NET

"GET THE WORD OUT."

Reina H. Miller, GRI-CRS
Broker, REALTOR®
Licensed Appraiser

 **Prudential**
Connecticut Realty

7 N Main Street, West Hartford, CT 06107
Bus 860 521-8100 Ext. 3040, 800 899-4792
Fax 860 521-7604 Res 860 233-2520
Mobile 860 305-5725 VM 860 561-8040
Email: rmliller@prudentialct.com



An independently owned and operated member of The Prudential Real Estate Alliance, Inc.

The Emanuel Family is celebrating Shabbat,
Friday, February 5, 2010
Join us for Dinner
Following Shabbat Services at 6:00 PM

Our tables seat 8 - 12. If you wish to arrange a table, please list the names on the other side of the reservation form. Otherwise, we will be happy to seat you with others who are attending.

THE DEADLINE IS MONDAY FEBRUARY 1ST BY NOON.
RESERVATIONS WILL NOT BE ACCEPTED AFTER THAT DATE.

<p>NAMES: Please list first and last name of each person attending.</p> <p>ADDRESS:</p> <p>PHONE:</p> <p>ADULTS AND CHILDREN EATING AN ADULT MEAL @ 16.00</p> <p>CHILDREN EATING A KID'S MEAL (NUGGETS) - \$4.00 (KIDS MEALS ARE FOR CHILDREN 12 AND UNDER ONLY)</p>

COST: \$16.00 PER MEAL
(Please select either chicken or vegetarian meals)

REMEMBER – DEADLINE IS MONDAY FEBRUARY 1ST AT NOON

- I/we are eating a chicken meal (include number needed)
- I/we are eating a vegetarian meal (include number needed)
- I/we need chicken nugget meals (include number needed)
- I/we will help with set up on Thursday, 2/4/10 at 9:30 am
- I/we will be happy to help serve the meal
- Please let me know if you need other help

Please observe the reservation deadline – Monday, February 1st at noon!
NO PHONE RESERVATIONS ACCEPTED - CHECKS ONLY

The Emanuel Synagogue, 160 Mohegan Drive
West Hartford, CT 06117

BRING YOUR FRIENDS TO THE EMANUEL

INVITE YOUR UNAFFILIATED FRIENDS TO MEET US AND EXPERIENCE THE EMANUEL COMMUNITY. FOR THE COST OF HIGH HOLIDAY TICKETS (AND SCHOOL FEES IF APPLICABLE) THEY CAN BE MEMBERS FOR A YEAR. IF THEY TRY US, WE THINK THEY WILL STAY.

HERE IS WHAT WE OFFER:

DIVERSE COMMUNITY • FABULOUS RELIGIOUS SCHOOL • SINGING TOGETHER IN SERVICES • COMMITMENT TO SOCIAL JUSTICE • EGALITARIAN DAILY MINYAN • APPROACHABLE CLERGY • AFFORDABLE DUES

PLEASE CONTACT: VAL MICHAELS, MEMBERSHIP CHAIR, 236-1275,
EMANSYN@EMANUELSYNAGOGUE.ORG; FRANCENE WEINGAST, CONNECTIONS COORDINATOR,
523-7778, FRANIWG@COMCAST.NET; OR SUZANNE CONNELL, EXECUTIVE DIRECTOR, 236-1275,
SUZANNE@EMANUELSYNAGOGUE.ORG



February 2010

Shevat/Adar I 5770

SUNDAY	MONDAY	TUESDAY	WEDNESDAY	THURSDAY	FRIDAY	SATURDAY
	1 17 Shevat <i>Shacharith 7am</i> <i>Mincha/Maariv 4:45pm</i>	2 18 Shevat <i>Shacharith 7am</i> Ritual Comm. Meeting 7:30pm - Act. Rm. <i>Mincha/Maariv 4:45pm</i>	3 19 Shevat <i>Shacharith 7am</i> <i>Mincha/Maariv 4:45pm</i>	4 20 Shevat <i>Shacharith 7am</i> Rabbi's Class 10:30am <i>Mincha/Maariv 4:45pm</i>	5 21 Shevat <i>Shacharith 7am</i> Ruach Shabbat Services 6pm followed by dinner Candles 4:52pm <i>Mincha/Maariv 4:45pm</i>	6 22 Shevat <i>Yitro</i> Services 9am Tot Shabbat Kahal/Club 10am Bat Mitzvah of Rebecca Baitch <i>Mincha/Maariv 4:45pm</i> <i>Havdalah 5:53pm</i>
7 23 Shevat World Wide Wrap and Shacharith 9:15am <i>Mincha/Maariv 4:45pm</i>	8 24 Shevat <i>Shacharith 7am</i> <i>Mincha/Maariv 4:45pm</i>	9 25 Shevat <i>Shacharith 7am</i> <i>Mincha/Maariv 4:45pm</i>	10 26 Shevat <i>Shacharith 7am</i> <i>Mincha/Maariv 4:45pm</i>	11 27 Shevat <i>Shacharith 7am</i> Rabbi's Class 10:30am <i>Mincha/Maariv 4:45pm</i>	12 28 Shevat <i>Shacharith 7am</i> Candles 5:01pm <i>Mincha/Maariv 5pm</i>	13 29 Shevat <i>Mishpatim</i> Services 9am Brotherhood Shabbat Shabbat Shekalim <i>Mincha/Maariv 5pm</i> <i>Havdalah 6:02pm</i>
14 30 Shevat <i>Shacharith 8am</i> No Religious School — Rosh Chodesh — <i>Mincha/Maariv 5pm</i>	15 1 Adar I <i>Shacharith 8am</i> No Religious School President's Day <i>Mincha/Maariv 5pm</i>	16 2 Adar I <i>Shacharith 7am</i> No Religious School <i>Mincha/Maariv 5pm</i>	17 3 Adar I <i>Shacharith 7am</i> No Religious School <i>Mincha/Maariv 5pm</i>	18 4 Adar I <i>Shacharith 7am</i> No Religious School <i>Mincha/Maariv 5pm</i>	19 5 Adar I <i>Shacharith 7am</i> Hebrew Home Shabbat 7pm Candles 5:10pm <i>Mincha/Maariv 5:15pm</i>	20 6 Adar I <i>Terumah</i> Services 9am Bat Mitzvah of Rebecca Goldman <i>Mincha/Maariv 5:15pm</i> <i>Havdalah 6:11pm</i>
21 7 Adar I <i>Shacharith 8am</i> No Religious School <i>Mincha/Maariv 5:15pm</i>	22 8 Adar I <i>Shacharith 7am</i> <i>Mincha/Maariv 5:15pm</i>	23 9 Adar I <i>Shacharith 7am</i> Board of Trustees Meeting 7:30pm - Bd. Rm. <i>Mincha/Maariv 5:15pm</i>	24 10 Adar I <i>Shacharith 7am</i> <i>Mincha/Maariv 5:15pm</i>	25 11 Adar I <i>Shacharith 7am</i> Fast of Esther <i>Mincha/Maariv 5:15pm</i>	26 12 Adar I <i>Shacharith 7am</i> USY TGIS Candles 5:18pm <i>Mincha/Maariv 5:15pm</i>	27 13 Adar I <i>Tetzaveh</i> Services 9am Kahal/Club Bar Mitzvah of Ian Frank Shabbat Zachor <i>Mincha 5:15pm</i> <i>Ma'ariv/Megillah 6:15</i> <i>Havdalah 6:20pm</i>
28 14 Adar I <i>Shacharith 8am</i> Megillah Purim Celebration School in session Ozreinu 4-5:30 Purim <i>Mincha/Maariv 5:15pm</i>						

The
Emanuel News

160 Mohegan Drive
West Hartford, CT 06117

Periodical
Postage
PAID
Hartford
Connecticut

January 2010

Tevet/Shevat 5770

SUNDAY	MONDAY	TUESDAY	WEDNESDAY	THURSDAY	FRIDAY	SATURDAY
					1 15 Tevet <i>Sbucharith 8am</i> Office Closed New Year's Day Candles 4:12pm <i>Mincha/Maariv 4:15pm</i>	2 16 Tevet <i>Veyechi</i> Services 9am Tot Shabbat 10am No Kahal <i>Mincha/Maariv 4:15pm</i> <i>Havdalah 5:13pm</i>
3 17 Tevet <i>Sbucharith 8am</i> <i>Mincha/Maariv 4:15pm</i>	4 18 Tevet <i>Sbucharith 7am</i> <i>Mincha/Maariv 4:15pm</i>	5 19 Tevet <i>Sbucharith 7am</i> Ritual Comm. Meeting 7:30pm - Act. Rm. <i>Mincha/Maariv 4:15pm</i>	6 20 Tevet <i>Sbucharith 7am</i> <i>Mincha/Maariv 4:15pm</i>	7 21 Tevet <i>Sbucharith 7am</i> Rabbi's Class 10:30am Exec. Committee Meeting 7:30pm - Library <i>Mincha/Maariv 4:15pm</i>	8 22 Tevet <i>Sbucharith 7am</i> Family Friendly Friday Service 7pm Candles 4:18pm <i>Mincha/Maariv 4:15pm</i>	9 23 Tevet <i>Sbemat</i> Services 9am Sisterhood Shabbat Kahal/Club Grade 4, 6 & 7 Havdallah Program <i>Mincha/Maariv 4:15pm</i> <i>Havdalah 5:19pm</i>
10 24 Tevet <i>Sbucharith 8am</i> Brotherhood Breakfast 9am - Koret Hall <i>Mincha/Maariv 4:15pm</i>	11 25 Tevet <i>Sbucharith 7am</i> <i>Mincha/Maariv 4:15pm</i>	12 26 Tevet <i>Sbucharith 7am</i> Brotherhood Cooking Class 6:30pm <i>Mincha/Maariv 4:15pm</i>	13 27 Tevet <i>Sbucharith 7am</i> <i>Mincha/Maariv 4:15pm</i>	14 28 Tevet <i>Sbucharith 7am</i> Rabbi's Class 10:30am <i>Mincha/Maariv 4:15pm</i>	15 29 Tevet <i>Sbucharith 7am</i> Hebrew Home Shabbat 7pm Candles 4:26pm <i>Mincha/Maariv 4:30pm</i>	16 1 Shevat <i>Va'era</i> Services 9am Kahal/Club Bar Mitzvah of Max Gilden Rosh Chodesh <i>Mincha/Maariv 4:30pm</i> <i>Havdalah 5:27pm</i>
17 2 Shevat <i>Sbucharith 8am</i> Ozreinu 4-5:30pm <i>Mincha/Maariv 4:30pm</i>	18 3 Shevat <i>Sbucharith 8am</i> Martin Luther King Day <i>Mincha/Maariv 4:30pm</i>	19 4 Shevat <i>Sbucharith 7am</i> Board of Trustees Meeting 7:30pm - Bd. Rm. <i>Mincha/Maariv 4:30pm</i>	20 5 Shevat <i>Sbucharith 7am</i> <i>Mincha/Maariv 4:30pm</i>	21 6 Shevat <i>Sbucharith 7am</i> Rabbi's Class 10:30am <i>Mincha/Maariv 4:30pm</i>	22 7 Shevat <i>Sbucharith 7am</i> USY TGIS Candles 4:34pm <i>Mincha/Maariv 4:30pm</i>	23 8 Shevat <i>Bo</i> Services 9am Kahal/Club Bat Mitzvah of Esther Schlossberg Shabbat Shalom 4:45pm Sisterhood Comedy Night <i>Mincha/Maariv 4:15pm</i> <i>Havdalah 5:35pm</i>
24 9 Shevat <i>Sbucharith 8am</i> Grade 7 Program 10-Noon <i>Mincha/Maariv 4:30pm</i>	25 10 Shevat <i>Sbucharith 7am</i> <i>Mincha/Maariv 4:30pm</i>	26 11 Shevat <i>Sbucharith 7am</i> Joint Sisterhood Meeting with Beth El <i>Mincha/Maariv 4:30pm</i>	27 12 Shevat <i>Sbucharith 7am</i> Snowdate for Joint Sisterhood Meeting <i>Mincha/Maariv 4:30pm</i>	28 13 Shevat <i>Sbucharith 7am</i> Rabbi's Class 10:30am <i>Mincha/Maariv 4:30pm</i>	29 14 Shevat <i>Sbucharith 7am</i> Candles 4:43pm <i>Mincha/Maariv 4:45pm</i>	30 15 Shevat <i>Beshalach</i> Services 9am Kahal/Club Bar Mitzvah of Zev Beigel Shabbat Shirah Tu B'Shevat <i>Mincha/Maariv 4:45pm</i> <i>Havdalah 5:44pm</i>
31 16 Shevat <i>Sbucharith 8am</i> Grade 3-5 Program 10-Noon <i>Mincha/Maariv 4:45pm</i>						